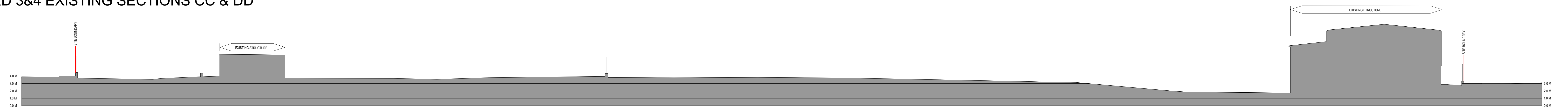
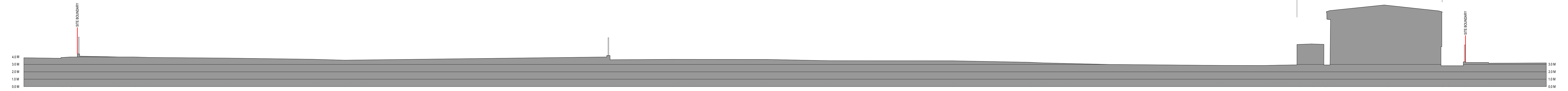


YARD 3&4 EXISTING SECTIONS CC & DD



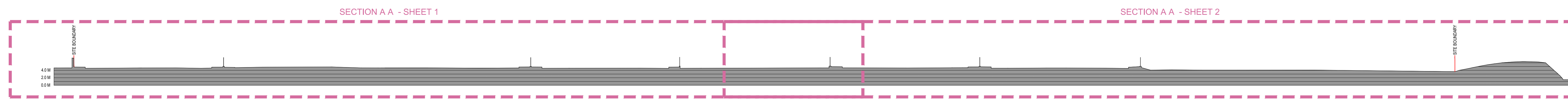
EXISTING SITE SECTION C C  
SCALE 1:200



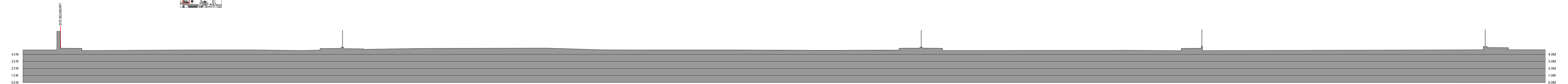
EXISTING SITE SECTION D D  
SCALE 1:200



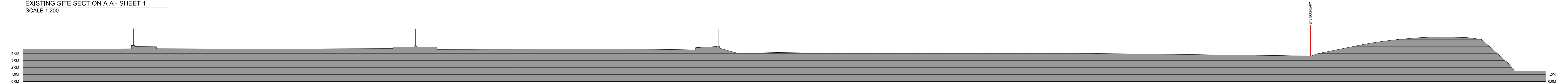
BOND DRIVE EXTENSION EXISTING SECTIONS AA & BB



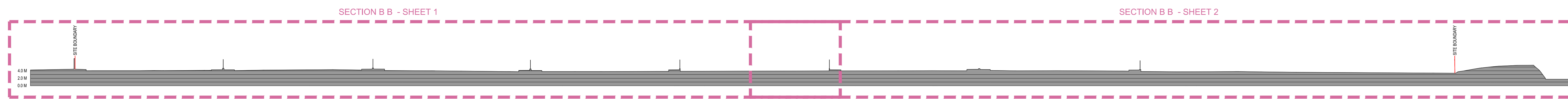
EXISTING SITE SECTION A A  
SCALE 1:200



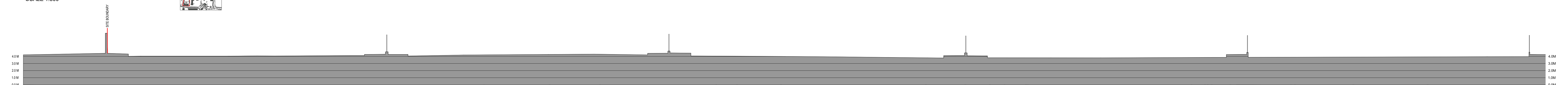
EXISTING SITE SECTION A A - SHEET 1  
SCALE 1:200



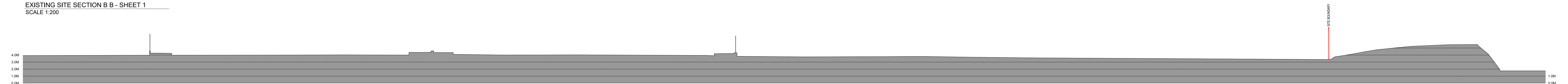
EXISTING SITE SECTION A A - SHEET 2  
SCALE 1:200




EXISTING SITE SECTION B B  
SCALE 1:500



EXISTING SITE SECTION B B - SHEET 1  
SCALE 1:200



EXISTING SITE SECTION B B - SHEET 2  
SCALE 1:200

 <p>Architectural Services OPW Dublin, 52, St. Stephen's Gn, D2, Telephone: (01) 647 6000 LoCall: 1890 213414 Website: www.opw.ie</p>	<p>State / Principal Architect Ciarán O'Connor, FRIAI, State / Principal Architect Director of Architectural Services Charles Moore, MRIA Head of Brexit Unit</p>	<p>Design Team Clíodhna Rice - MRIA Senior Architect Conor O'Donnell - MRIA Sarah Heery - MRIA Donal McIntyre - Graduate Architect</p>	<p>Drawing Revisions</p>		<p>DATE:</p>	<p>Drawing Title</p>		<p>Project Title</p>			
			<p>REF DESCRIPTION</p> <p>A REV: B REV: C REV: D REV: E REV:</p>	<p>EXISTING SITE SECTIONS</p> <p>DRAWN    CHECKED    SCALE    DATE</p> <p>COD    CR    Various @A0    May 2020</p>		<p>Brexit Infrastructure at Dublin Port Dublin Port, Dublin 3</p> <p>PROJECT NO.    STATUS    NUMBER    REV.</p> <p>A.20.001    EIAR    10-004</p>					